

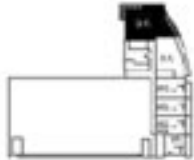
UNIT 3-A

3 BEDROOM / 3 1/2 BATH

UNIT S.F. 1,680 s.f.
TERRACE S.F. 286 s.f.
TOTAL S.F. 1,966 s.f.



Biscayne Bay



KEY PLAN

2nd thru 7th FLOOR (PARKING / LOFT)



GRAPHIC SCALE