

KEY PLAN



Contact:
Mark Zilbert
 Web: www.zilbert.com
 Tel: (305) 726-0100
 E-Mail: mzilbert@zilbert.com
 Zilbert Realty Group is an independent broker, not affiliated with the developer

MONDRIAN

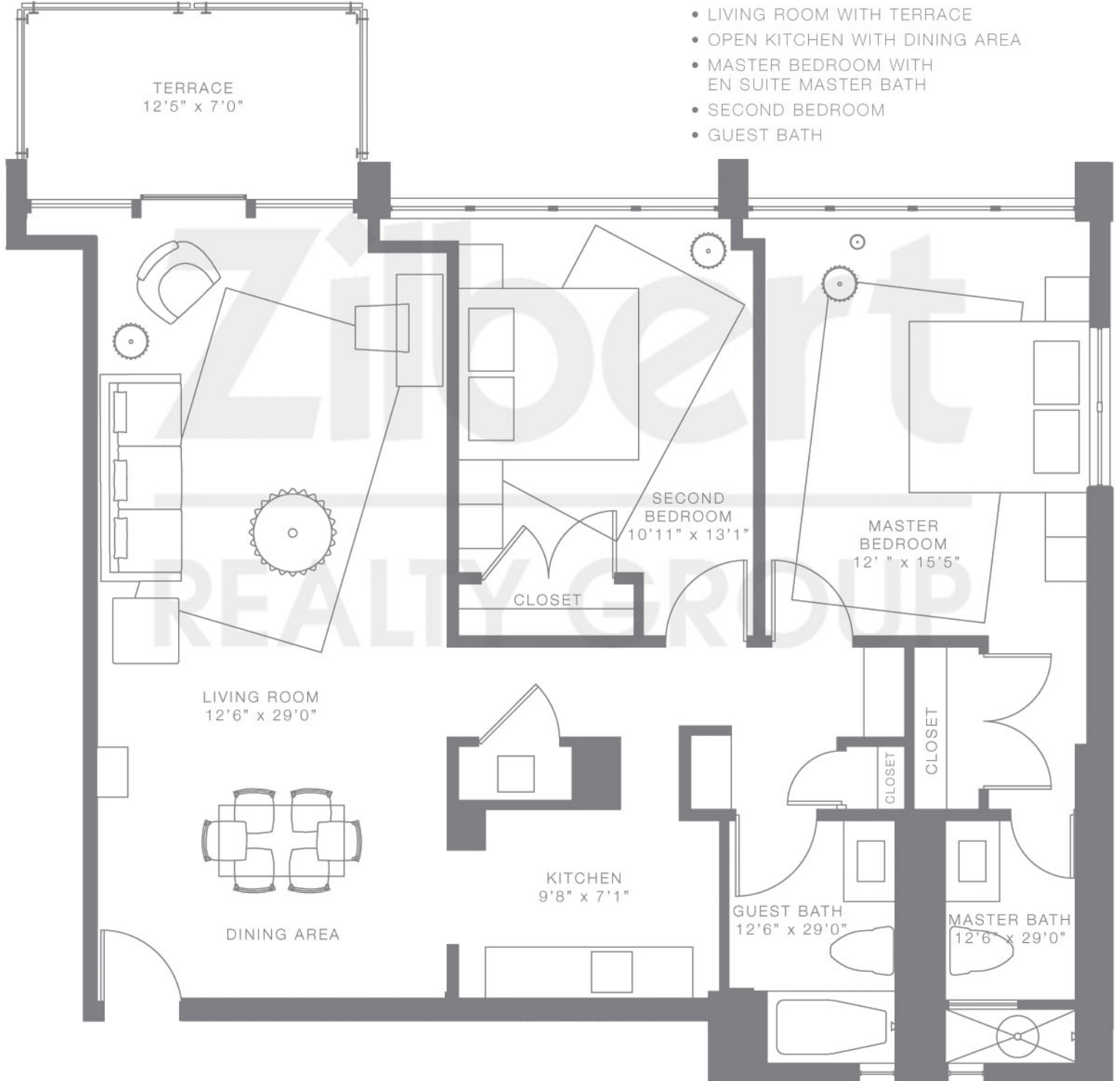
SOUTH BEACH

HOTEL RESIDENCE 16 & 26 BAYSIDE

INTERIOR 1177 SQ. FT.
 TERRACE 87 SQ. FT.

2 BEDROOM
 2 BATH

- LIVING ROOM WITH TERRACE
- OPEN KITCHEN WITH DINING AREA
- MASTER BEDROOM WITH EN SUITE MASTER BATH
- SECOND BEDROOM
- GUEST BATH



ALL DIMENSIONS ARE APPROXIMATE AND SUBJECT TO CHANGE IN ACCORDANCE WITH THE AGREEMENT FOR SALE. Stated dimensions are measured to the exterior boundaries of the exterior walls and the centerline of interior demising walls and in fact vary from the dimensions that would be determined by using the description and definition of the "Unit" set forth in the Declaration (which generally only includes the interior airspace between the perimeter walls and excludes interior structural components). Additionally, measurements of rooms set forth on any floor plan are generally taken at the greatest points of each given room (as if the room were a perfect rectangle), without regard for any cutouts. Accordingly, the area of the actual room will typically be smaller than the product obtained by multiplying the stated length times width. All dimensions are approximate, and all floor plans and development plans are subject to change.